

The NA Series

State-of-the-Art in High Pressure Compression

NA Series compressor pumps are available as bare head blocks or integrated in fully or partially assembled breathing air and industrial gas systems from North American's international network of independent high pressure professionals.

NA Series compressors are made in America to withstand the stress of modern continuous duty applications in the most demanding environments. The NA Series blocks are the ideal choice for flexibility and trouble free performance in the safety, diving, and general industrial markets.

All NA Series blocks are built to the highest quality standards and are supported by a two year manufacturer's warranty. Replacement parts are readily available and reasonably priced.

Contact North American today for further information on the NA Series compressor for your specific application or the location of the independent system packager in your area or industry.

NA SERIES HIGH PRESSURE BREATHING AIR COMPRESSORS Technical Specifications

Model	NA 9	NA 12	NA 18
Medium	Air	Air	Air
Number of stages	3	4	4
Cylinder bore 1st stage	3.47 inch	3.47 inch	4.31 inch
Cylinder bore 2nd stage	1.419 inch	1.73 inch	1.94 inch
Cylinder bore 3rd stage	.50 inch	.995 inch	.995 inch
Cylinder bore 4th stage	NA	.50 inch	.50 inch
Piston stroke	2.00 inch	2.00 inch	2.00 inch
Delivery at 6,000 psi*	1050 rpm	NA	7 cfm
	1200 rpm	NA	8.5 cfm
Delivery at 5,000 psi*	1100 rpm	9 cfm	NA
	1200 rpm	NA	10.4 cfm
	1400 rpm	NA	11.8 cfm
	NA	12.6 cfm	18.0 cfm
Intake pressure	Atmospheric	Atmospheric	Atmospheric
Intermediate pressure 1st stage	100 psi	46 psi	60 psi
Intermediate pressure 2nd stage	1080 psi	210 psi	280 psi
Intermediate pressure 3rd stage	5000 psi	975 psi	1050 psi
Operating pressure, maximum	5000 psi	6000 psi	6000 psi
Ambient temperature range	40-110 deg. F	40-110 deg. F	40-110 deg. F
Outlet temperature	<15 deg. F above ambient	<15 deg. F above ambient	<15 deg. F above ambient
Compressor block oil capacity	4 qts.	4 qts.	4 qts.
Oil delivery, approximate	60 psi/.75 gpm	60 psi/.75 gpm	60 psi/.75 gpm
Net weight, approximate	120 lbs.	140 lbs.	145 lbs.

*Charging rate based on filling 80 cubic foot tank from 500 to 3,000 psi

The NA Series High Pressure Compressors

The Complete Solution for Breathing Air and Industrial Gas Applications....
In America and Around the World

STATE-OF-THE-ART-DESIGN

Three and four-stage designs for low vibration and balanced and balanced rod loads.
Strong two-piece crankshaft for superior durability.
Heavy duty, shaft-driven, gear type oil pump with high capacity spin-on oil filter provides generous lubrication to critical wear areas for longer pump life.
Interstage cooler, aftercoolers, finned cylinders, finned aluminum heads, fan-bladed flywheel allows cooler operating and discharge temperatures.
Quiet operation (56 decibel sound rating)
Dual crankcase covers for easy access to crankshaft and connecting rods.

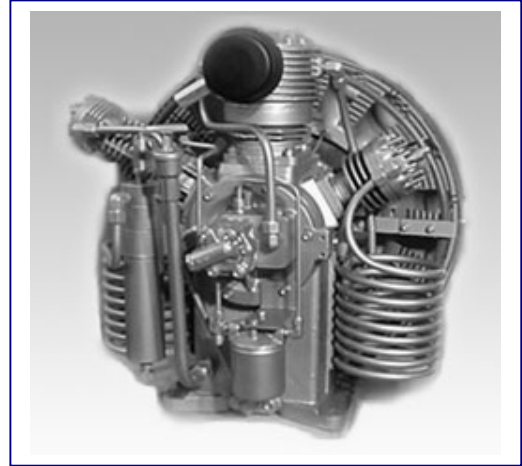
TOP GRADE MATERIALS

Aluminum crankcase eliminates unnecessary weight.
Cast iron cylinders for strength and durability.
Ductile iron counterbalanced crankshaft with large diameter throw.
Aluminum cylinder heads for superior heat dissipation.
High grade aluminum connecting rods for high strength and precise alignment.

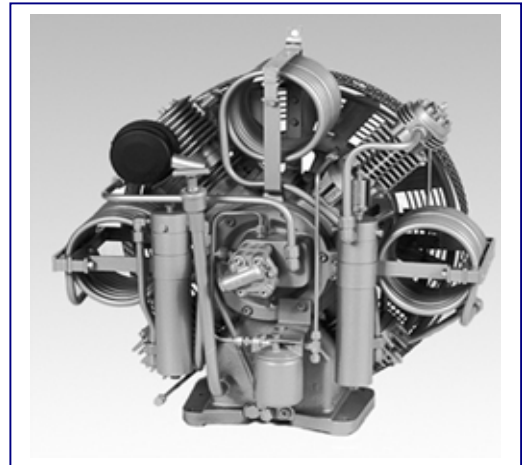
QUALITY ASSURANCE

All compressor pumps individually tested and certified for performance to required operating conditions.
Two Year Manufacturer's Warranty.

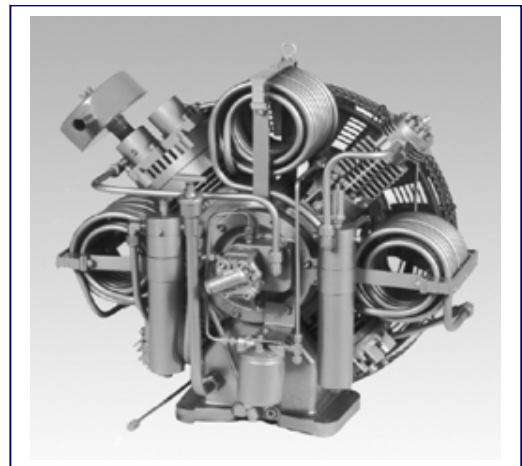
North American Compressor Corporation
(405) 232-8214 – FAX (405) 971-0585
www.nacompressor.com



Model NA 9: Three stage design for compression from 6 to 9 scfm at 5,000 psi



Model NA 12: Four stage radial design for compression from 10 to 12 scfm at 5,000 to 6,000 psi



Model NA 18: Four stage radial design for compression from 14 to 17 scfm at 5,000 to 6,000 psi